

# EMCO VERTICAL VT 250

Vertical pick-up turning machine

**emco** group

Designed for your profit

Optimal access to the work area,  
ergonomically ideal for operators

Powerful main spindle with high  
torque for short cycle times

Simple programming and operation  
thanks to the state-of-the-art control  
technology Sinumerik 828D with  
Shopturn dialog programming and  
Sinamics drives

Quick loading through direct  
pick-up of raw materials by  
the conveyor belt using the  
spindle (pick-up concept)

[NEW]

Variable automation possible through an  
adjustable conveyor belt integrated into  
the machine

Two independent tool systems: 12-position  
turret VDI40 with and without milling drive and  
a multi-functional plate for special tools

Chip conveyor (slat band) with  
integrated coolant device as standard

## [Highlights]

- Designed for heavy-duty machining
- Small footprint
- Integrated self-loading system
- Latest Siemens control unit
- Straight chip fall
- Optional driven tools and Y axis
- Made in the Heart of Europe

# [Technical data]

**emco**group

Designed for your profit

## EMCO VERTICAL VT 250

Work area	
Maximum chuck diameter	250 mm (9.8")
Maximum turning diameter	200 mm (7.9")
Maximum part length	150 mm (5.9")
Travel	
Travel X/Z axis	530 / 310 mm (20.9" / 12.2")
Travel Y axis	+/- 90 mm (+/- 3.5")
Rapid motion speed X / Y / Z	60 / 15 / 30 m/min (23.6/5.9/11.8")
Main spindle	
Speed range	0-4000 rpm

Main spindle	
Drive power	25 kW (33.5 hp)
Torque	280 Nm
Tool turret	
Number of tool holders	12
Tool shaft according VDI (DIN 69880)	VDI40
Driven tools	12
Speed range	0-4000 rpm
Drive power	8.5 kW (11.4 hp)
Torque	40 Nm

### Versions EMCO VERTICAL VT 250

**EMCO VERTICAL VT 250 – Basic machine without driven tools with belt drive on the main spindle**

**EMCO VERTICAL VT 250 M – Machine with driven tools and hollow spindle drive**

**EMCO VERTICAL VT 250 MY – Machine with driven tools, Y axis and hollow spindle drive**



V-belt pulley  
(Steel)



Wheel hub  
(Steel)



Belt pulley  
(Steel)

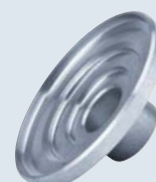


Plate flange  
(Steel)

[www.emco-world.com](http://www.emco-world.com)